

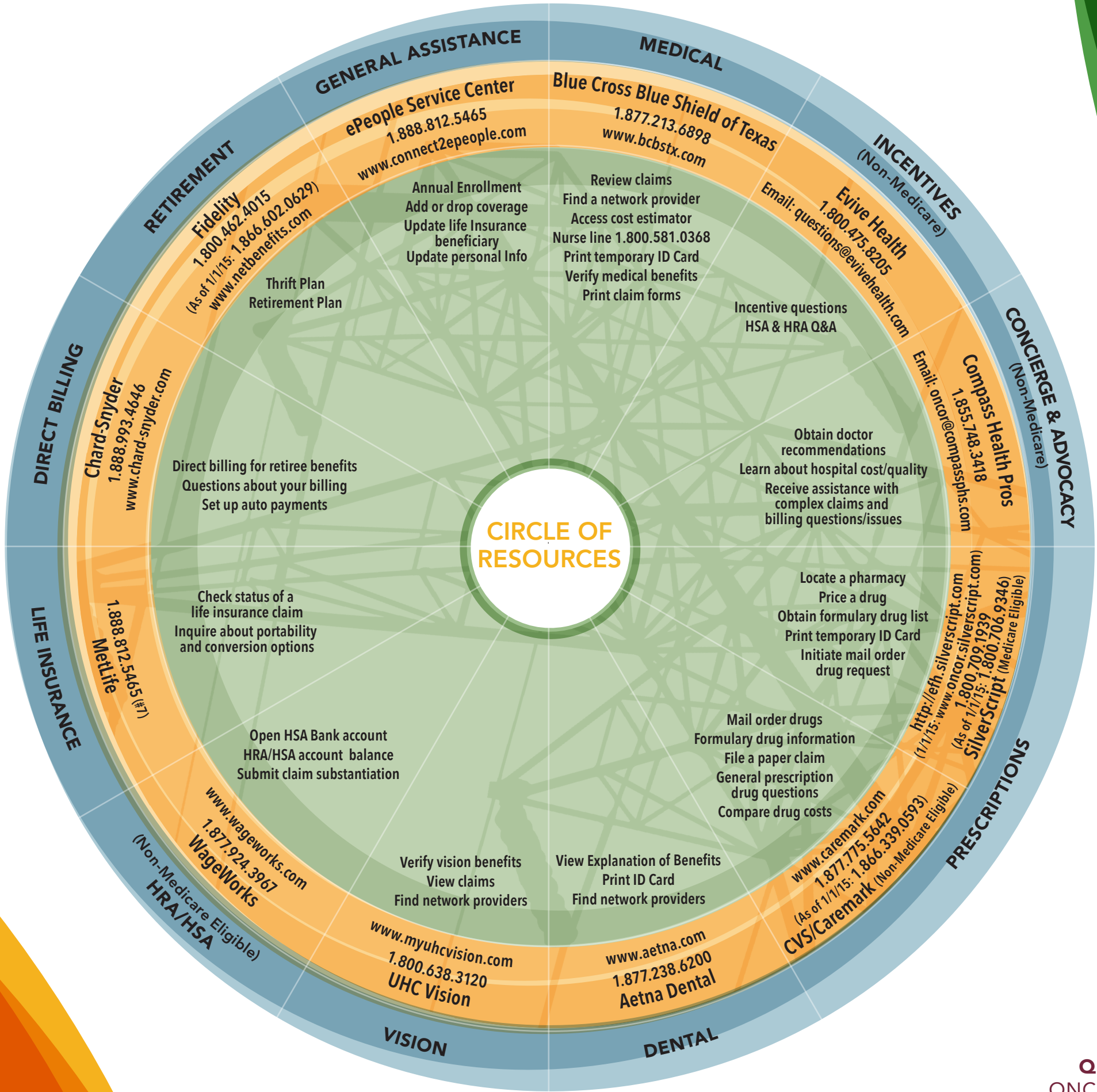


YOUR ONCOR RETIREE CIRCLE OF RESOURCES



YOUR ONCOR RETIREE CIRCLE OF RESOURCES

As an Oncor Retiree, you have a Circle of Resources to access information and obtain assistance with your benefit needs. This illustration shows you where to go for questions and information about specific benefits. Simply find the benefit program you want help with, and you'll see the provider's contact information and a sample of topics you can explore. Note that the ePeople HR Service Center provides general assistance on a variety of issues.



MEDICARE ELIGIBLE?

Consider the options at OneExchange. You may find a plan that meets your needs at a lower premium. You can call 1.844.498.5563 or visit <https://medicare.oneexchange.com> for more information.

QUESTIONS? GO TO GUIDESPARK
ONCORRETIRES.A.GUIDESPARK.COM